

- TRIPHASE                      -E 400 V
- MONOTRIPHASE                -E 230/400 V

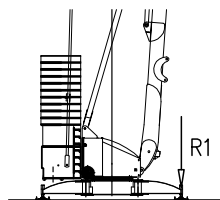
**GRU A MONTAGGIO RAPIDO**  
**GRUE A MONTAGE RAPIDE**  
**GRUA DE RAPIDO MONTAJE**  
**GRUA DE MONTAGEM RAPIDA**  
**QUICK SELFRECTING CRANE**  
**HYDRAULISCHER SCHNELLMONTAGEKRAN**

Curve di carico – Courbes de charges – Load diagrams – LastKurven – Curvas de cargas

25° Triphase	☒ 400V	<table border="1"> <tr><td>3</td><td>23</td><td>26</td><td>27,7</td></tr> <tr><td>600</td><td>600</td><td>600</td><td>600</td></tr> </table>	3	23	26	27,7	600	600	600	600	m kg	20° Triphase	☒ 400V	<table border="1"> <tr><td>3</td><td>23</td><td>26</td><td>28,4</td></tr> <tr><td>600</td><td>600</td><td>600</td><td>600</td></tr> </table>	3	23	26	28,4	600	600	600	600	m kg
3	23	26	27,7																				
600	600	600	600																				
3	23	26	28,4																				
600	600	600	600																				
25° MonoTriphase	☒ 230/400V	<table border="1"> <tr><td>3</td><td>23</td><td>26</td><td>27,7</td></tr> <tr><td>600</td><td>600</td><td>600</td><td>600</td></tr> </table>	3	23	26	27,7	600	600	600	600	m kg	20° MonoTriphase	☒ 230/400V	<table border="1"> <tr><td>3</td><td>23</td><td>26</td><td>28,4</td></tr> <tr><td>600</td><td>600</td><td>600</td><td>600</td></tr> </table>	3	23	26	28,4	600	600	600	600	m kg
3	23	26	27,7																				
600	600	600	600																				
3	23	26	28,4																				
600	600	600	600																				
15° Triphase	☒ 400V	<table border="1"> <tr><td>3</td><td>23</td><td>26</td><td>29,3</td></tr> <tr><td>700</td><td>700</td><td>700</td><td>700</td></tr> </table>	3	23	26	29,3	700	700	700	700	m kg	10° Triphase	☒ 400V	<table border="1"> <tr><td>3</td><td>23</td><td>26</td><td>29,7</td></tr> <tr><td>700</td><td>700</td><td>700</td><td>700</td></tr> </table>	3	23	26	29,7	700	700	700	700	m kg
3	23	26	29,3																				
700	700	700	700																				
3	23	26	29,7																				
700	700	700	700																				
15° MonoTriphase	☒ 230/400V	<table border="1"> <tr><td>3</td><td>23</td><td>26</td><td>29,3</td></tr> <tr><td>700</td><td>700</td><td>700</td><td>700</td></tr> </table>	3	23	26	29,3	700	700	700	700	m kg	10° MonoTriphase	☒ 230/400V	<table border="1"> <tr><td>3</td><td>23</td><td>26</td><td>29,7</td></tr> <tr><td>700</td><td>700</td><td>700</td><td>700</td></tr> </table>	3	23	26	29,7	700	700	700	700	m kg
3	23	26	29,3																				
700	700	700	700																				
3	23	26	29,7																				
700	700	700	700																				

Triphase	☒ 400V	<table border="1"> <tr><td>3</td><td>13,53</td><td>14</td><td>18</td><td>22</td><td>26</td><td>30</td></tr> <tr><td>2400</td><td>2400</td><td>2300</td><td>1690</td><td>1320</td><td>1070</td><td>900</td></tr> </table>	3	13,53	14	18	22	26	30	2400	2400	2300	1690	1320	1070	900	m kg				
3	13,53	14	18	22	26	30															
2400	2400	2300	1690	1320	1070	900															
MonoTriphase	☒ 230/400V	<table border="1"> <tr><td>3</td><td>13,53</td><td>14</td><td>18</td><td>22</td><td>26</td><td>30</td></tr> <tr><td>2200</td><td>2200</td><td>2100</td><td>1690</td><td>1320</td><td>1070</td><td>900</td></tr> </table>	3	13,53	14	18	22	26	30	2200	2200	2100	1690	1320	1070	900	m kg				
3	13,53	14	18	22	26	30															
2200	2200	2100	1690	1320	1070	900															
Triphase	☒ 400V	<table border="1"> <tr><td>3</td><td>13,7</td><td>14</td><td>16</td><td>18</td><td>20</td><td>22</td><td>24</td><td>26</td></tr> <tr><td>2400</td><td>2400</td><td>2350</td><td>2000</td><td>1720</td><td>1510</td><td>1350</td><td>1210</td><td>1100</td></tr> </table>	3	13,7	14	16	18	20	22	24	26	2400	2400	2350	2000	1720	1510	1350	1210	1100	m kg
3	13,7	14	16	18	20	22	24	26													
2400	2400	2350	2000	1720	1510	1350	1210	1100													
MonoTriphase	☒ 230/400V	<table border="1"> <tr><td>3</td><td>13,7</td><td>14</td><td>16</td><td>18</td><td>20</td><td>22</td><td>24</td><td>26</td></tr> <tr><td>2200</td><td>2200</td><td>2150</td><td>2000</td><td>1720</td><td>1510</td><td>1350</td><td>1210</td><td>1100</td></tr> </table>	3	13,7	14	16	18	20	22	24	26	2200	2200	2150	2000	1720	1510	1350	1210	1100	m kg
3	13,7	14	16	18	20	22	24	26													
2200	2200	2150	2000	1720	1510	1350	1210	1100													
Triphase	☒ 400V	<table border="1"> <tr><td>3</td><td>13,3</td></tr> <tr><td>2400</td><td>2400</td></tr> </table>	3	13,3	2400	2400	m kg	MonoTriphase	☒ 230/400V	<table border="1"> <tr><td>3</td><td>13,3</td></tr> <tr><td>2200</td><td>2200</td></tr> </table>	3	13,3	2200	2200	m kg						
3	13,3																				
2400	2400																				
3	13,3																				
2200	2200																				

Reazioni – Reactions – Réactions – Eckdrücke – Reacciones – Reações



R1 ● 19 t ■ 13 t

▲ 10 t ○ 20,6 t

{ N°2 A=3500Kg (1750Kgx2)  
 N°2 B=2100Kg (1050Kgx2)  
 N°12 C=15000Kg (1250Kgx12)

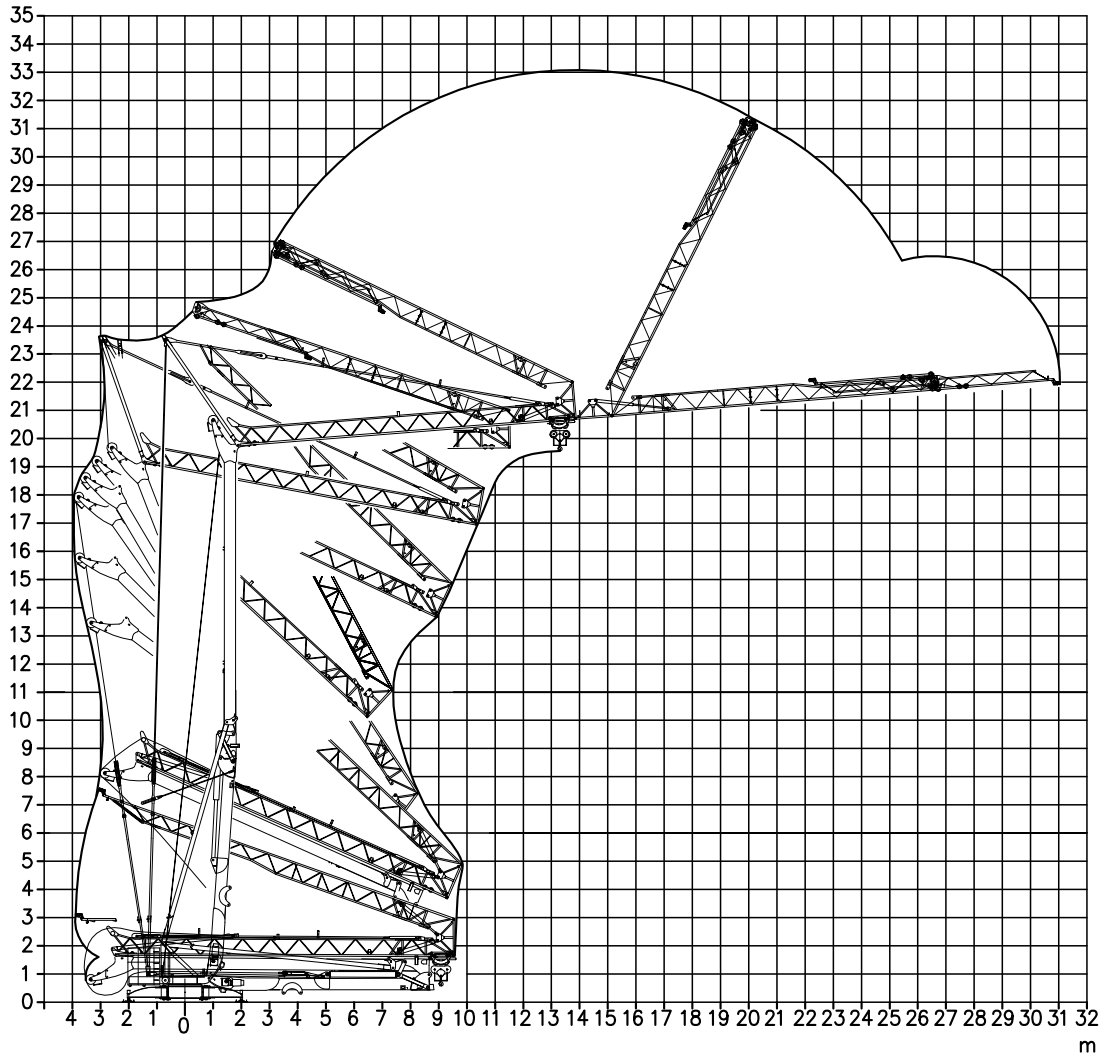
● Reazioni in servizio | Reactions in service | Réactions en service  
 Reaktionskräfte in betrieb | Reacciones en servicio | Em serviço

■ Reazioni fuori servizio | Reactions out of service | Réactions hors service  
 Reaktionskräfte außer betrieb | Reacciones fuera de servicio | Fora de serviço

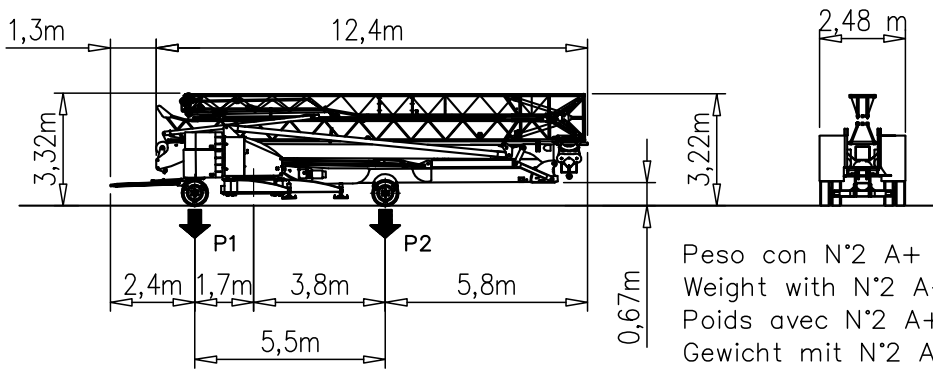
▲ Peso della gru senza assali | Dead weight without transport axles | Poids de construction sans essieux  
 Konstruktionsgewicht ohne transportachse | Peso de la grua sin tren de transporte | peso de la grua sem carro de transporte

○ Peso zavorra rotante | Ballast weight | Poids du lest  
 Ballastgewicht | Peso de lastre | Peso de lastre rotativo

Montaggio – Montage – Erection – Montage – Montaje – Montagem



Trasporto – Transport – Transport – Transport – Transporte – Transporte



P1	Kg	7850
P2	Kg	8410
Ptot	Kg	16260

Peso con N°2 A+ N°2 B+ assali  
 Weight with N°2 A+ N°2 B+ transport axles  
 Poids avec N°2 A+ N°2 B+ essieux de transport  
 Gewicht mit N°2 A+ N°2 B+ transportachsen  
 Peso con N°2 A+ N°2 B+ ejes de transporte  
 Peso com N°2 A+ N°2 B+ eixos de transporte

Meccanismi – Mechanisms – Mécanismes – Antriebe – Mecanismos

Triphase – 400V	V9.32 Sollevamento Hoisting Levage Heben Elevaciòn Elevaçao					 m/min vs t	V9.32 6.6 Kw (9 Hp) 17.5 kVA 	
		m/min	4	13	32			40
		t	2.4	2.4	1.0			0.6
Carrello Trolleying Distribution Katzfahren Distribuciòn Distribuiçao			1a	0 → 30	m/min	2.2 kW (3 Hp)		
			2a					
Rotazione Slewing Orientation Schwenken Orientaciòn Rotaçao			1a	0 → 0.8	giri/min tr/min rp/min	2.2 kW (3 Hp)		
			2a					
			3a					

MonoTriphase – 230/400V	V9.32 Sollevamento Hoisting Levage Heben Elevaciòn Elevaçao					 m/min vs t	V9.32 6.6 Kw (9 Hp) 17.5 kVA 	
		m/min	4	11	25			35
		t	2.2	2.2	1.0			0.6
Carrello Trolleying Distribution Katzfahren Distribuciòn Distribuiçao			1a	0 → 30	m/min	2.2 kW (3 Hp)		
			2a					
Rotazione Slewing Orientation Schwenken Orientaciòn Rotaçao			1a	0 → 0.8	giri/min tr/min rp/min	2.2 kW (3 Hp)		
			2a					
			3a					

Rete elettrica – Réseau – Mains supply – Netzstrom – Red – Alimentação	230/400V – 50 Hz
Potenza elettrica necessaria – Puissance électrique nécessaire Necessary electric power – Anschlusswert – Potencia electrica necesaria	3Hp – 17,5 kVA 1Hp – 2 kVA

FEM 1.001–A3 2000/14/CE	
----------------------------	--