

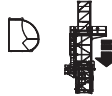
Power Control ASsys ACsys ULTRALIFT

Torre/Reazioni – Masts/Reactions – Mat/Réactions – Maste/Eckdrücke – Mästil/Reacciones – Tramo/Reacções

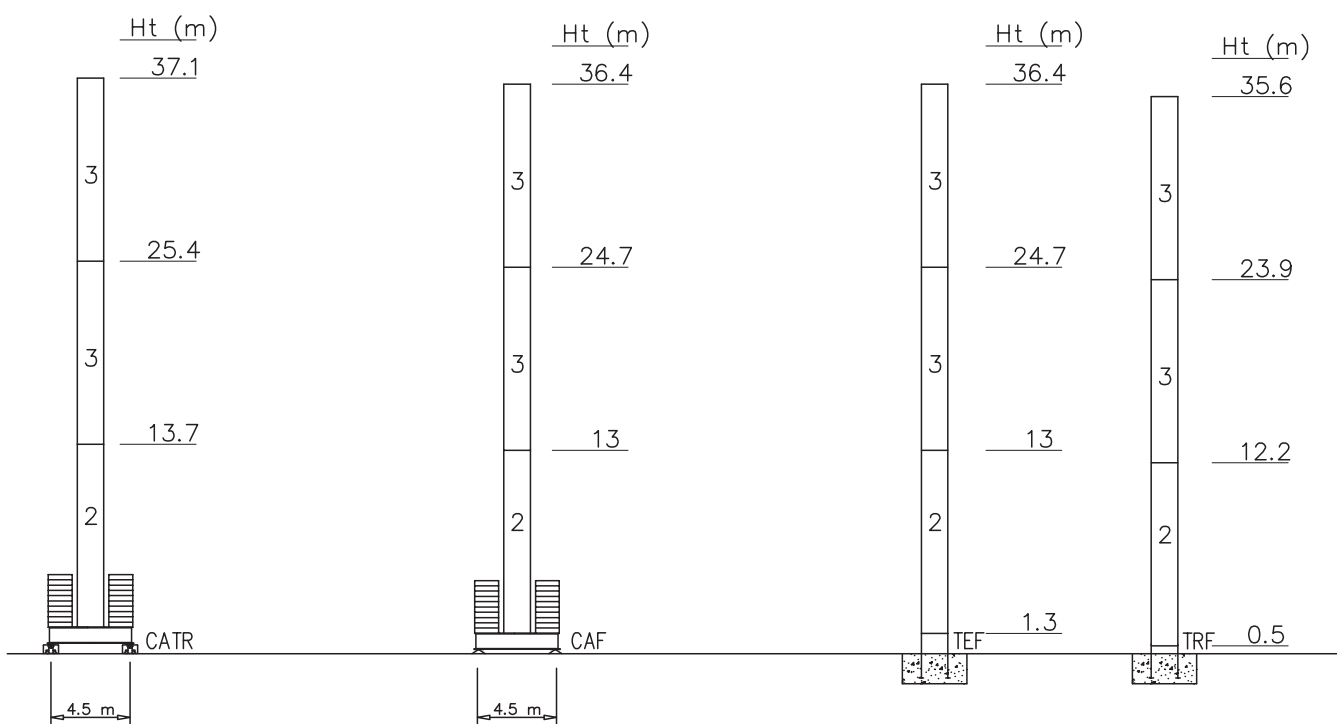
SK1700 EN14439-C25



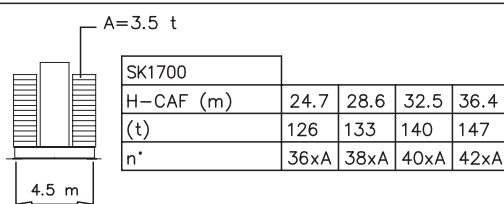
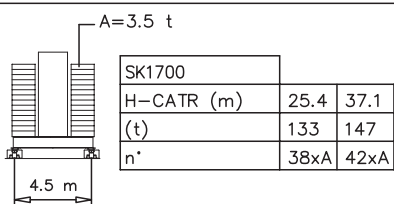
30 → 52 m



6	BCF052	2/4
5	BPF117	4/4
4	BPF039	4/4
3	ST117	2/2
2	BAF117	4/2
1	ST039	2/2

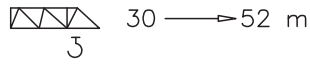


Peso zavorra – Ballast weight – Poids du lest – Ballastgewicht – Peso de lastre

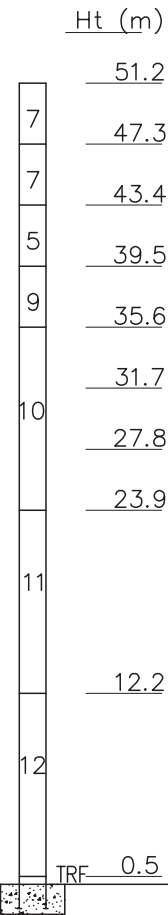
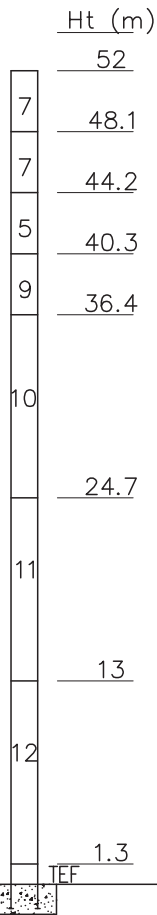


Torre/Reazioni – Masts/Reactions – Mat/Réactions – Maste/Eckdrücke – Mästil/Reacciones – Tramo/Reacções

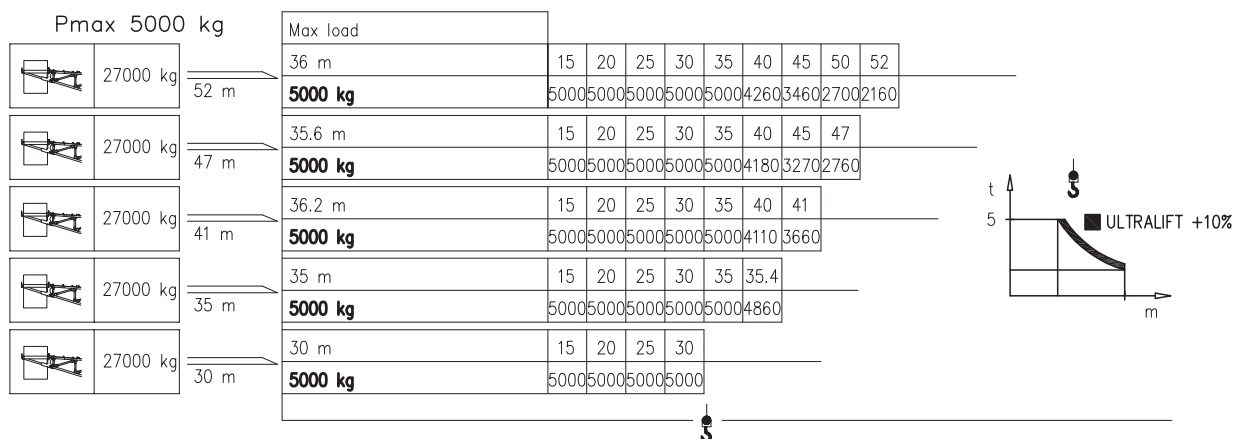
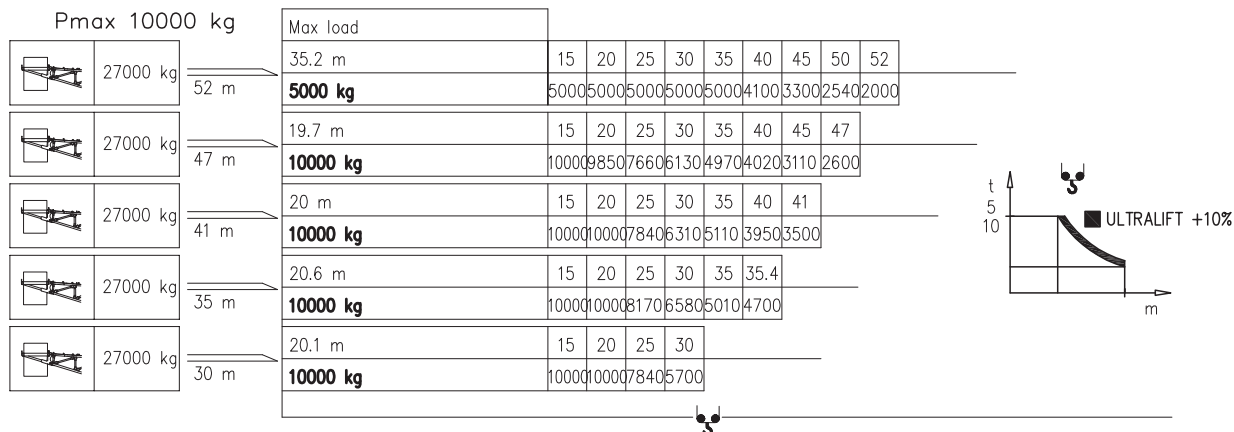
SN2050 | EN14439-C25



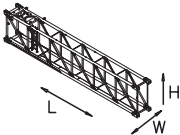
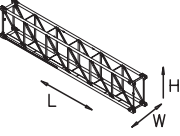
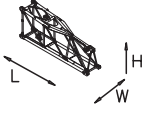
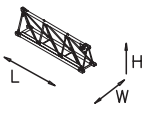
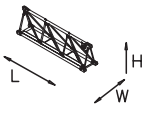
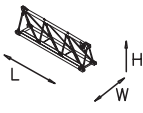
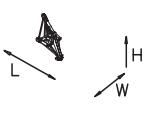

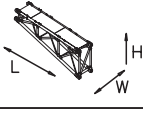
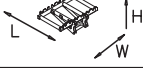
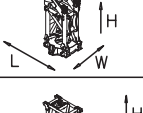


14	BCF052	2/4 M45
13	BAF052	2/4 M42
12	BPF117	4/4 M45-45
11	BNF117	4/4 M45-42
10	BOF117	4/4
9	BOF039	4/4
8	BO039	4/4
7	STR039	2/2
6	SBR117	4/2
5	SBR039	4/2
4	SB117	4/2
3	SB039	4/2
2	ST117	2/2
1	ST039	2/2



Curve di carico – Courbes de charges – Load diagrams – LastKurven – Curvas de cargas



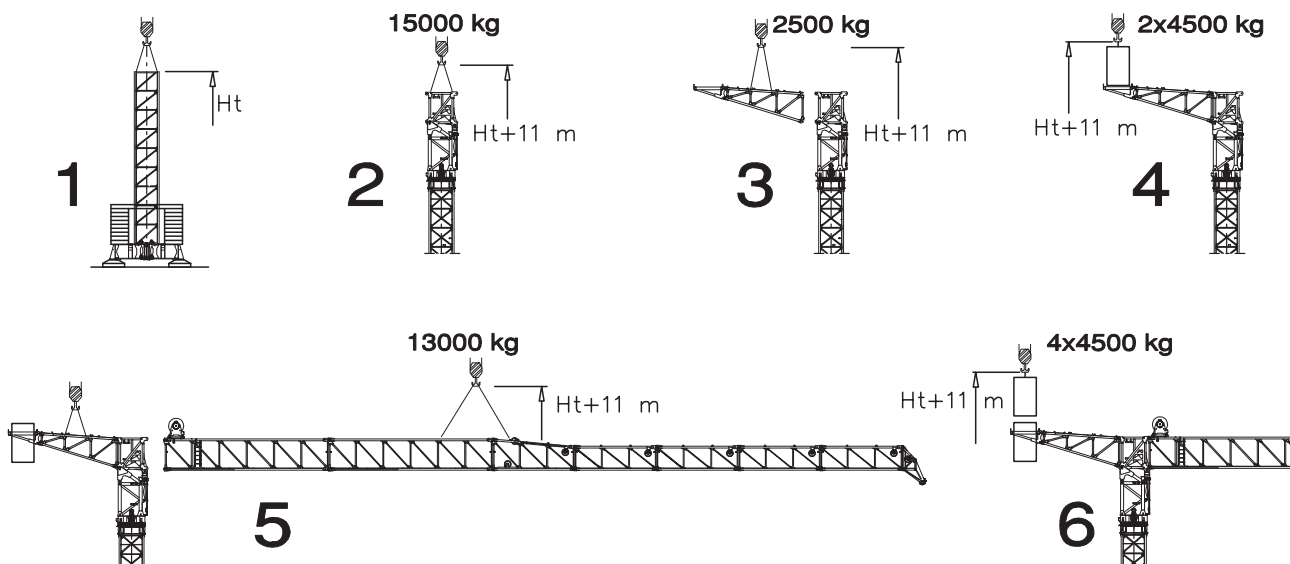
PESI E INGOMBRI – PACKING LIST – LISTE DE COLISAGE – GEWICHT UND ABMESSUNGEN

Denominazione Description	Disegno Draw	Pezzi Pieces	Dimensioni-Dimensions (mm)			Peso-Weight (kg)		
			L	W	H	Unit	Total	
Elemento di braccio Jib element Elément de èche Elemento de flecha (52 m jib version)	n°1 	1	11400	1140	2250	2670	2670	
	n°2 	1	11400	1140	2250	1910	1910	
	n°3 	1	5780	1190	2230	1240	1240	
	n°4 	1	5780	1140	1730	780	780	
	n°5 	1	5780	1140	1730	700	700	
	n°6 	2	5780	1140	1730	620	620	
	P 	1	1720	1160	2690	560	560	
Gancio/Crochet Gancho/Hook block Lasthaken		1	350	1050	1450	370	370	
Contorbraccio completo Complete counterjib Contreflèche complète Contraflecha completa		1	5490	1100	2100	1240	1240	
Telaio supporto zavorra élément de support de lest elemento soporte contrapeso C-weight support/Ballast-Stützelement		1	1980	3100	1010	1100	1100	
Gruppo girevole Slewing group Table tournante Grupo giratorio		SK1700	–	1990	2280	4690	6770	–
		SN2050	–	1990	2280	4690	7100	–
Elemento ribaltante/élément de fixation du piston/elemento de fijación del piston/Connecting piston element/Zylinderbefestigungselement		1	2230	1150	2440	2250	2250	
Blocchi contrappeso Counterweight block Contre-poids Bloques de contrapeso		6	2040	380	2520	4500	27000	

PESI E INGOMBRI – PACKING LIST – LISTE DE COLISAGE – GEWICHT UND ABMESSUNGEN

Denominazione Description	Disegno Draw	Pezzi Pieces	Dimensioni-Dimensions (mm)			Peso-Weight (kg)			
			L	W	H	Unit	Total		
Ballatoio con cabina Access balcony with cabin Porte cabine Balcòn corrido con cabina		1	4270	1630	2550	1540	1540		
Elemento di torre Mast element Elèment de mature Elemento de torre	ST039		SK1700	-	3900	1785	1785	1750	-
	STR039		SN2050	-	3900	2110	2110	2320	-
	ST117		SK1700	-	11700	1785	1785	4690	-
			SN2050	-	11700	2110	2110	5790	-
	SB039		SK1700	-	3900	1925	1925	2030	-
		SBR039		SN2050	-	3900	2110	2110	2710
	BCF052		SK1700	-	5200	1785	1785	3700	-
		BAF052		SN2050	-	5200	2110	2110	4850
	SB117		SK1700	-	11700	1785	1785	4780	-
		SBR117		SN2050	-	11700	2110	2110	7000
	BOF039		SK1700	-	3900	1925	1925	2640	-
			SN2050	-	3900	2110	2110	3770	-
	BAF117 BNF117 BPF117		SK1700	-	11700	1785	1785	7100	-
			SN2050	-	11700	2110	2110	8180	-
			SN2050	-	11700	2110	2110	8180	-
	BOF117 BNF117 BPF117		SK1700	-	11700	1925	1925	7500	-
		SN2050	-	11700	2110	2110	8180	-	
		SN2050	-	11700	2110	2110	8180	-	
Carro di base Base carriage Chassis de base Cruceta de base		4.5x4.5	1+2	7550	800	1100	-	8650	
		5x5	1+2	7550	670	780	-	4450	
		6x6	1+2	8870	670	780	-	5000	
Puntoni di base Rafter Jambes de force Cabrios de base		5x5	4	4250	240	300	280	1120	
		6x6	4	4560	420	300	420	1680	
Blocco zavorra di base Base ballast block Lest de base Blaque de lastre		4.5x4.5	-	4400	1200	290	3500	-	
		5x5	2	5300	1000	600	7300	14600	
		6x6	2	6400	1200	600	10600	21200	
		5x5	-	4100	1600	300	3500	-	
		6x6	-	4800	2000	300	5070	-	
		6x6	-	4800	2000	300	5070	-	

Montaggio – Montage – Erection – Montage – Montaje – Montagem



Meccanismi – Mechanisms – Mécanismes – Antriebe – Mecanismos

Sollevamento V50.130 Hoisting Levage Heben Elevaciòn Elevaçao												V50.130 37 kW 60 kVA 270 m 500 m (L)
	m/min	12	40	66	85	127	6	20	33	43	64	
	t	5	5	3	2	1	10	10	6	4	2	

Impennamento Trolleying Distribution Katzfahren Distribuciòn Distribuiçao			2° → 85°	1.6 min	30 kW	Potenza elettrica necessaria Puissance électrique nécessaire Necessary electric power Anschlusswert – Potencia
Rotazione Slewing Orientation Schwenken Orientaciòn Rotaçao			0 → 0,56	giri/min tr/min rp/min	n°2x 7.5 kW	
Traslazione Travelling Translation Kranfahren Traslaciòn Translaçao			0 → 20	m/min	n°4x11 kW	

Rete elettrica – Réseau – Mains supply – Netzstrom – Red – Rede electrica	400V – 50 Hz
---	--------------

FEM 1.001 – A4 EN 14439 – C25	
----------------------------------	--